

A VISION FOR CANCER SERVICES IN WALES TO MATCH THE BEST IN EUROPE

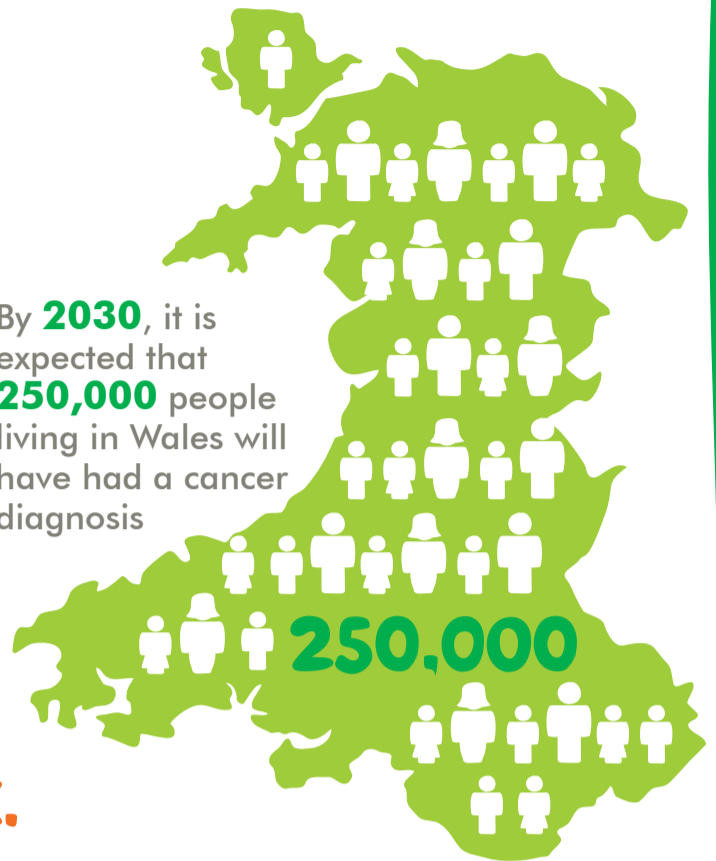
IN WALES WE ARE CURRENTLY
10 YEARS

BEHIND THE BEST IN EUROPE FOR CANCER SURVIVAL

OVER 19,000
ARE DIAGNOSED WITH
CANCER EVERY YEAR
IN WALES

OVER 130,000
ARE LIVING WITH
OR BEYOND CANCER
IN WALES

By **2030**, it is expected that **250,000** people living in Wales will have had a cancer diagnosis



WE CAN IMPROVE CANCER SUPPORT BY MAKING SURE THAT EVERYONE HAS WELL CO-ORDINATED CARE.



Access to a specialist cancer nurse (CNS) has been shown to play a vital role in the delivery of high quality, person-centred care.



74% of people who don't have access to a CNS rate their care as excellent or very good. This rises 91% for those who had a CNS.



Specialist cancer nurses (CNS) are part of the cancer multidisciplinary team and are usually recognised as the key worker.



ASSESSMENT & CARE PLANNING

This is an opportunity for people to be part of the decisions around their care. This includes discussions around the **experience, skills & expertise** an individual can contribute to improving their own health and quality of life.

ONLY 1 IN 5 CANCER PATIENTS REPORT BEING OFFERED A WRITTEN CARE PLAN.



The care plan sets priorities for care, action timeframes and approaches needed to address an individual's needs or concerns.



We know that that **80%** of all worries were around **physical** and **emotional** concerns. The top five areas identified were:

WORRY FEAR & ANXIETY

TIRED, EXHAUSTED OR FATIGUED

PAIN & DISCOMFORT

SLEEP PROBLEMS, NIGHTMARES

EATING & APPETITE



Signposting: Only 51% of patients said that they had been given enough information about how to get financial help.

£71m

Since 2010 Macmillan's benefits advisers in Wales have supported people affected by cancer to receive over **£71m** in financial benefits they were entitled to.

20%

Loss of income is greatest in the first year after diagnosis, when the average person loses an estimated **20%** - **£5,500** in Wales - of their earnings.

NI YW MACMILLAN. CYMORTH CANCER

WE ARE MACMILLAN. CANCER SUPPORT

FIND OUT MORE AT:

www.Macmillan.org.uk

@MacmillanCymru

www.facebook.com/macmillan.cymruwales